



Eliminator Track™



Versatility at work.

What do you want to eliminate?

Lost clients due to high remodeling costs.

Complex projects to manage.

Unnecessary labor time and expense.

Eliminator Track™ is an innovative, all-in-one track designed to eliminate headaches. Headaches for distributors, contractors and building owners. This simple design enables easy installation and smoother labor coordination of different trades at the jobsite.

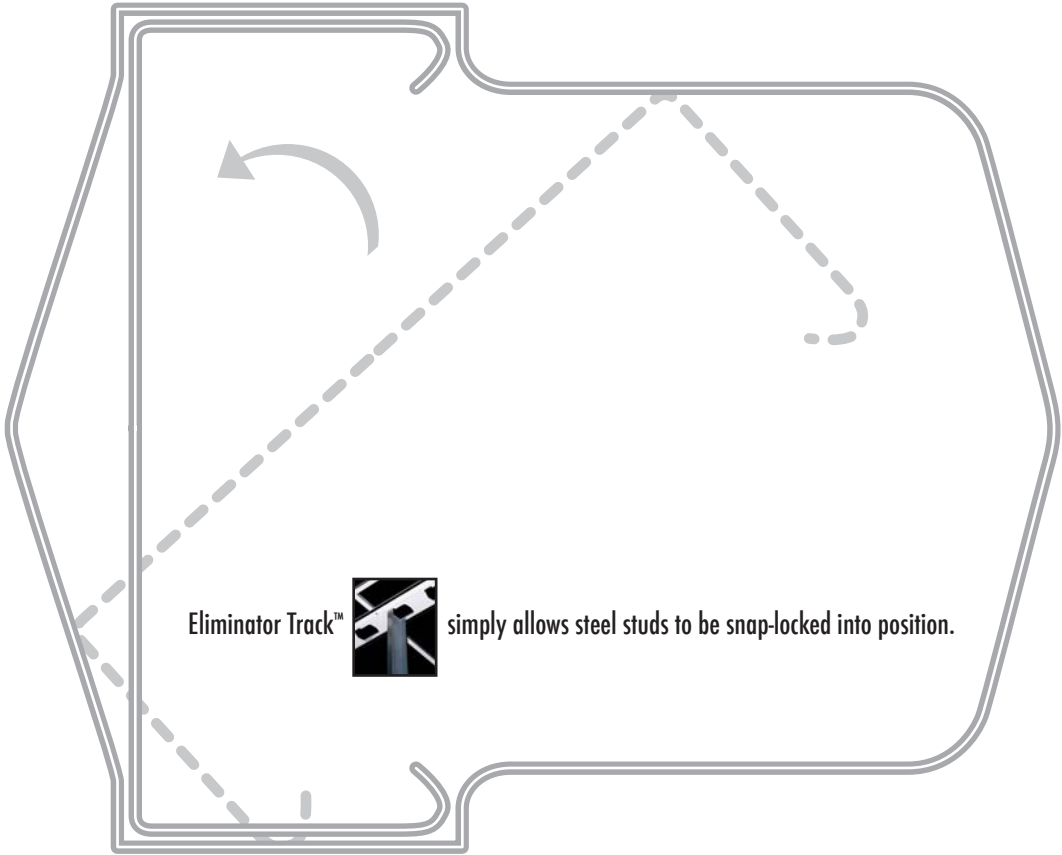
So anywhere you're considering a suspended ceiling, you should be considering Eliminator Track to build out your interior walls.



Studs hang in a snap.



Eliminator Track's amazing simplicity carries over to the entire build out.



Eliminator Track™

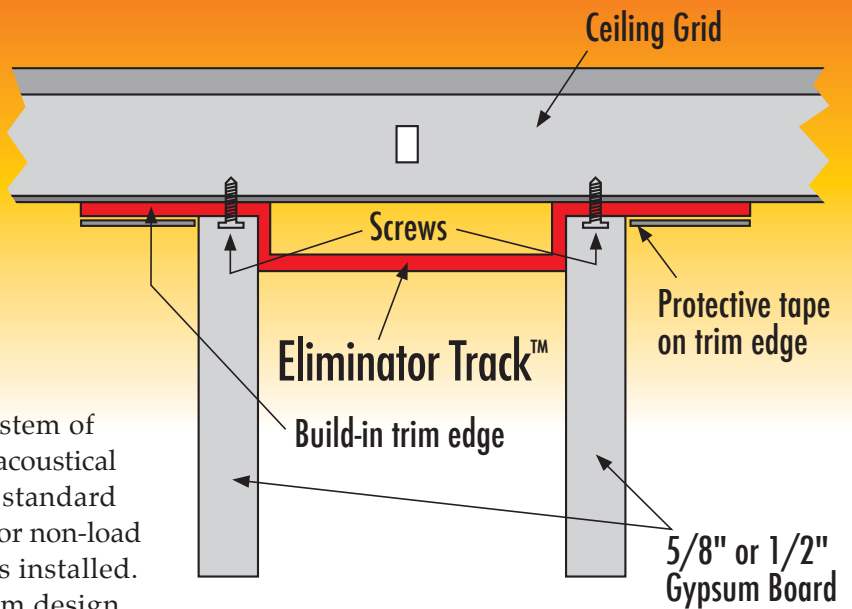


simply allows steel studs to be snap-locked into position.

Eliminator Track™

Versatility at work

ALL-IN-ONE-TRACK

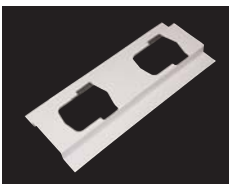


Eliminator Track™ is an innovative system of integrating steel drywall framing with acoustical grid ceilings. It is designed to replace standard top track when framing 25 gauge interior non-load bearing walls anywhere ceiling grid is installed.

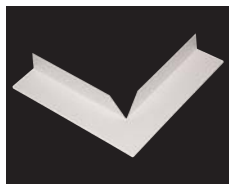
Eliminator Track™ allows for maximum design flexibility and is quickly installed. Mechanical, electrical, ceiling and framing trades benefit from Eliminator Track™ and building owners benefit from reduced labor and time on projects.

Eliminator Track™ is available for 2-1/2" and 3-5/8" interior, non-load bearing wall conditions. Our patented design allows wall studs at 16" or 24" spacing. The wall studs simply snap into place and eliminate the need to measure studs spacing.

Eliminator Track™ provides a permanent looking ceiling/wall intersection on walls built to the underside of the acoustical ceiling. The finished edge is part of the design of the Eliminator Track™ system.



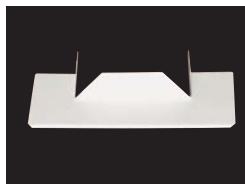
Eliminator Track™



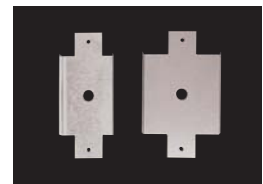
90° Corner Plate



135° Corner Plate



Endcap



Splice Plates

Item	Pieces/Carton	L.F./ Piece	L.F./Carton	Carton/Skid	L.F./Skid
2-1/2" Eliminator Track™	10	12'-0"	120	18	2,160
3-5/8" Eliminator Track™	10	12'-0"	120	18	2,160
90° Corner	50				
135° Corner	50				
2-1/2" End Cap	50				
3-5/8" End Cap	50				
2-1/2" Splice Plate	25				
3-5/8" Splice Plate	25				

For more information call
Pro Products Mfg. at 763-552-0853
 or visit our new website:
www.eliminatortrack.com

Pro Products Mfg., L.L.C. | 32015 128th Street NW | Princeton, MN 55371



Eliminator Track™

Versatility at work